



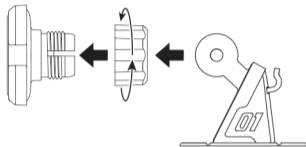
User Manual

Magnetic Car Phone Mount



Operation steps

1. Put the universal ball into the nut first, then insert it into the socket on the back of the holder. Fasten the nut clockwise to its position.

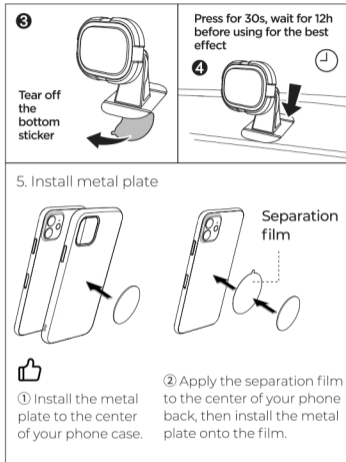


2. Clean the dashboard or windshield with a wet cloth, wait for it to dry.

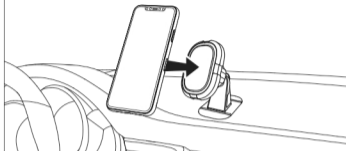


3. Tear off the bottom sticker (DO NOT touch the 3M adhesive with your fingers).

4. Install the car mount on the dashboard/windshield and press it for 30 seconds, wait for 12h before using for the best effect.



6. Adjust the car mount to a desired angle and position, attach your phone.



Cautions

- When tearing off the bottom sticker, pay attention not to touch the 3M adhesive to avoid poor stickiness.
- After installing the car mount, do not use it immediately, but press it for 30 seconds and wait for 12 hours before using.
- The 3M adhesive is not reusable.
- Incompatible with leather or flannel surfaces.
- For waxed dashboard, first remove wax where you need to install the car mount with the cleaning kit, then you can install it.
- For phone cases thicker than 2mm, do not install the metal plate on the inner side of the case.

Warranty Card

User Name:	User Tel:
User address (with postcode):	
Dealer Name:	Purchase date:
Dealer Tel:	Invoice No.:
Dealer Address (with postcode):	

Warranty

A. If there is performance failure on this product and it's not caused by human error, we will provide a 12-month free warranty service for consumers from the date of purchase.

B. Warranty exceptions:

- Human damage;
- Expired the warranty period;
- Failure to provide valid purchase certificate;
- Product damage caused by failure to follow the use, maintenance and care instructions;
- Product damage caused by disassembling or repairing the product without authorization, or immersing the product in water;
- Damage caused by force majeure.